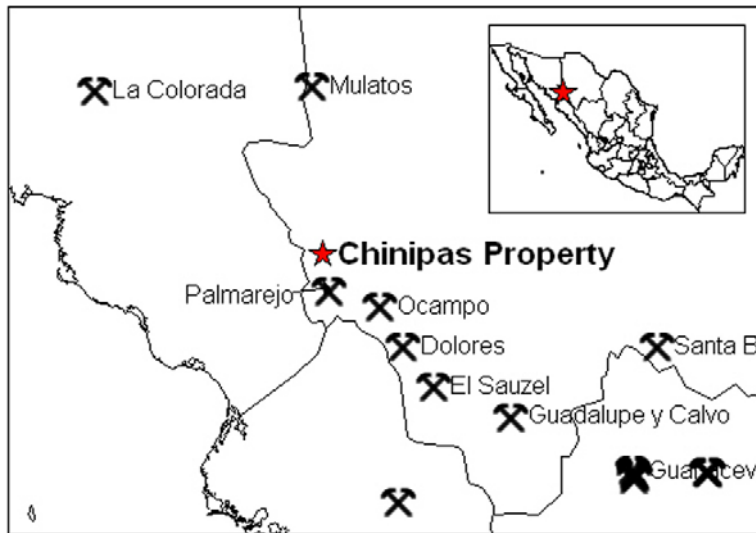


Chinipas Property

Gold Property
1371 hectares (Title # 231286)
100% Soltoro

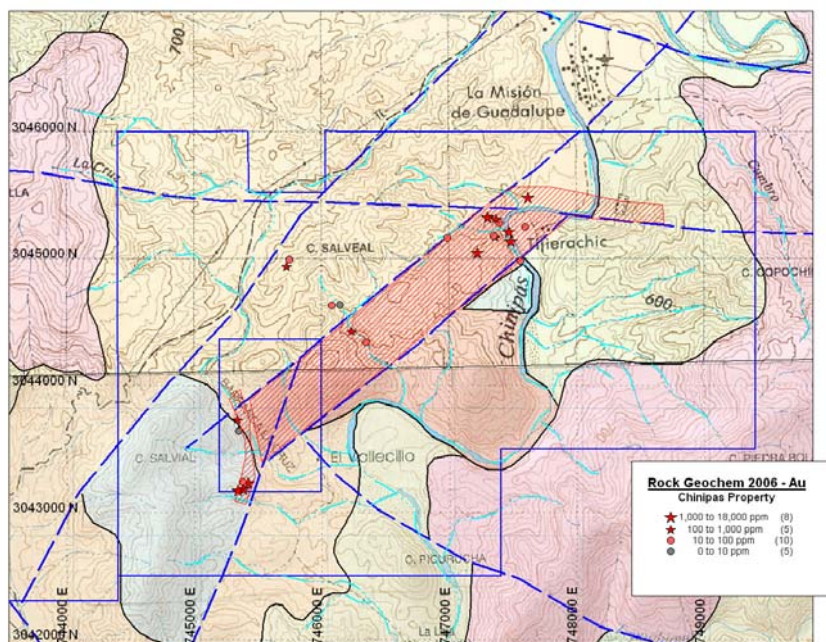


Location: The Chinipas Property is located in the southwest part of the State of Chihuahua, Mexico, in the municipality of Chinipas de Almada, at an elevation of between 500 and 900 masl. It is accessed from Chihuahua (the capital city of Chihuahua) by a paved highway to the town of Creel then west to Temorris and onto the

small town of Chinipas on gravel road, all drivable year-round. Access is also available from the western side entering from Sonora. The Palmarejo Mine which was sold to Coeur d'Alene, is located 14km to the SE. Access from the town of Chinipas is possible all year round on good gravel roads.

History: Two prospects within the claim area have seen limited gold production in the past, though little is known about their history. The Tajirachic Mine is located in the NE part of the claim which has been worked for gold from high grade quartz-tourmaline-pyrite veins. The Las Cruces area is located in the SW portion of the claim within an internal claim of 96 has. and consists of a Fe magnetite skarn with gold mineralization.

Geology: The area of the Chinipas Property is located in the western margin of the Sierra Madre Occidental tectonostratigraphic terrane, a linear, north-northwest elongated package of Upper Series rhyolites overlaying a Lower Series of andesite volcanics. In the area of the Chinipas Property the Lower Series andesites have been intruded by a



Contact: Andrew Thomson, President Phone: (416) 987 0722 Email: at@soltoro.com

granodiorite intrusive which itself has been intruded by a later quartz feldspar porphyry (QFP). A narrow band of sediments (mainly limestone) outcrops along the western, northern and southern sides of the QFP and is host to a Au bearing Fe – magnetite skarn.

Mineralization at the Chinipas Project is gold hosted in a strongly fractured QFP. The fracturing appears related to numerous faults and appears to be bound by a NE trending set of faults. Quartz–tourmaline +/- pyrite veins have produced limited quantities of high grade gold in the NE portion of the claim, mainly from one principle vein. Numerous smaller veins occur in the QFP and are also gold bearing though have not been exploited nor mapped systematically. Initial sampling by Soltoro returned values up to 17.6 gpt Au from selected vein samples from an area of 1700m by 500m and recent mapping has extended the strike length to 3000m.

Recent Programs: A program of mapping and sampling on the Chinipas Property was just carried out in Feb. 2009 and results are pending.

The company is seeking a joint venture partner to carry out further exploration.



View of mineralized zone (looking southwest).



Typical vein and stockwork mineralization.



Local prospector extracting visible gold.